

Table of Contents

- | [Property Details](#)
- | [Property Video](#)
- | [Floorplan](#)
- | [Property Inclusions](#)
- | [Relevant Documents](#)
- | [Comparable Sales](#)
- | [Around Maitland](#)
- | [About Us](#)
- | [Disclaimer](#)

Property Details



27 Ken Tubman Drive, MAITLAND

A Central Special

3  2  2 

**Property
Preview**

Air Conditioning

Floor boards

Courtyard

Fully Fenced

Built In Robes

Dishwasher

Maitland's inner city is well known for its heritage architecture. From Pender's sort after federation beauties to the impressive historical commercial zone, but the region's post war timber cottages hold a special place in many hearts with nostalgic memories of childhood homes.

Today we offer you an excellent example of what can be done when you blend a great mix of contemporary and traditional, which we think perfectly suits the home. Original features of the home include polished timber floors, timber fretwork in the hallway, original picture rails and ornate ceilings.

Designed with accessibility at the forefront, the home welcomes everyone in a gratifying embrace. A beautiful palette of greys, natural timber and calm whites combine with reclaimed and handcrafted pieces to imbue the home with a serene sense of place and history. Both pretty and practical, the kitchen looks the goods with a sympathetic yet modern aesthetic and being adjacent to the living room means the cook enjoys still being part of family life. Large, open and airy bedrooms toward the front of the home invite you in and a beautiful spacious accessible ensuite in the main is a delight to enjoy.

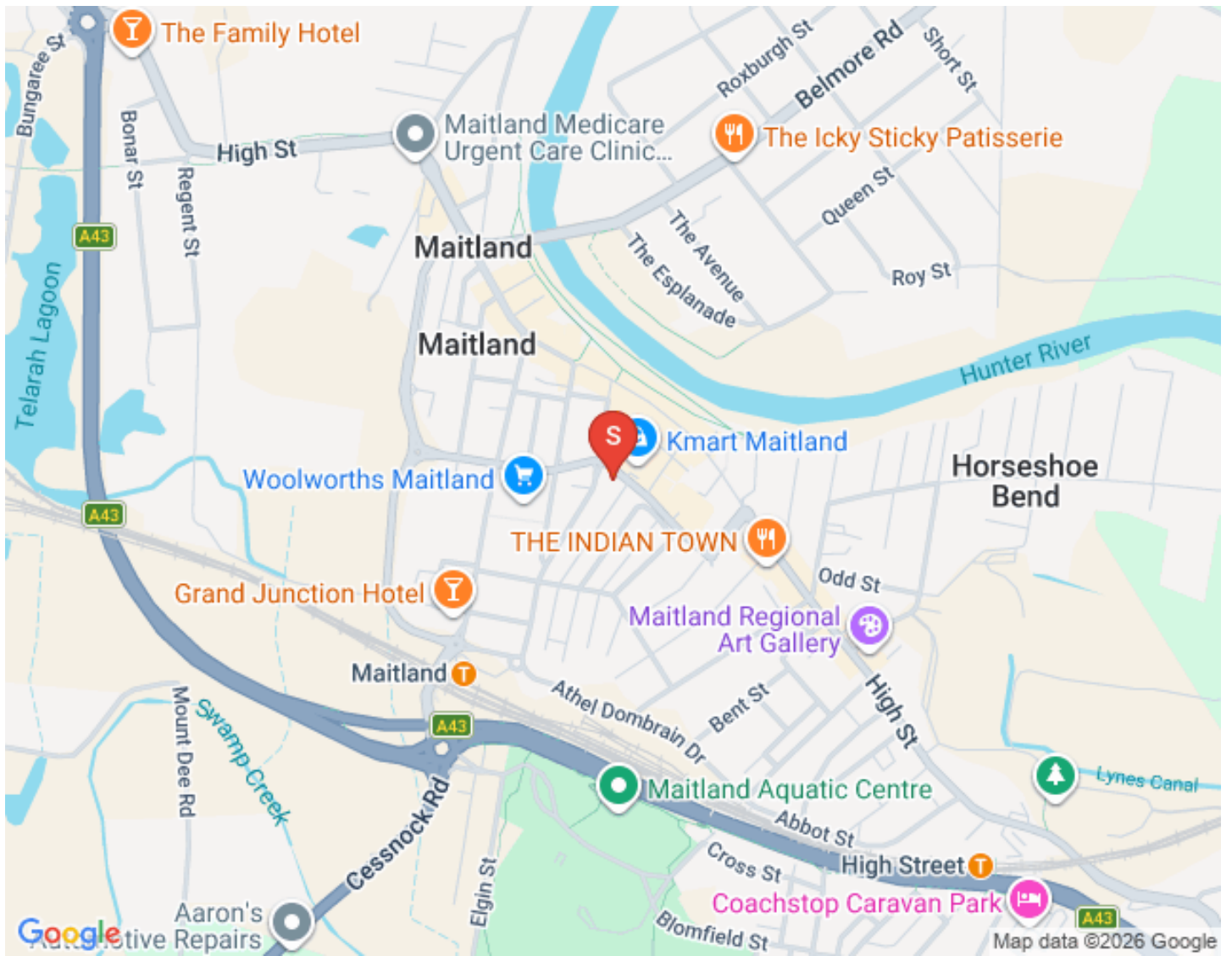
Out the back, a paved terrace has been dressed up with a pergola featuring laser light to keep

the area bright and an outdoor kitchen/BBQ area, garden beds and comfortable seating space, make it an area you will want to spend a lot of down time in. Inner city living is being discovered as a hidden gem of Maitland and you're going to love the proximity of the property to amazing cafes and restaurants, as well as options for shopping. Everything is within walking distance and there's a real metro feel to the area.

This property is proudly marketed by Pat Howard, contact 0408 270 313 for further information or to book your private inspection.

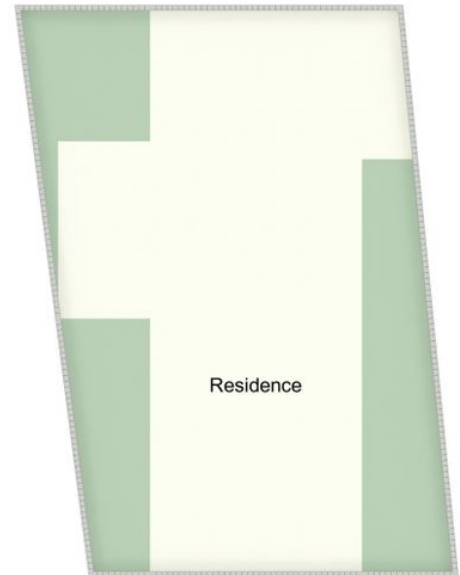
" First National David Haggarty, We Put You First "

Disclaimer: All information contained herein is gathered from sources we deem to be reliable. However, we cannot guarantee its accuracy and interested persons should rely on their own enquiries.

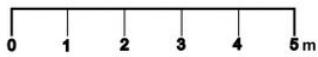


Property Video

Floorplan

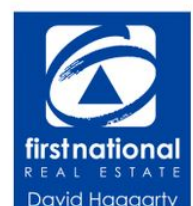


Site Plan
Not to Scale



27 Ken Tubman Dr, Maitland

All information contained herein is gathered from sources we deem reliable. However, we cannot guarantee its accuracy and act as a messenger only in passing on the details. Interested parties should rely on their own inquiries and the contract for sale. The floor plans are artist's impressions only. The site plan is not to scale.



Property Inclusions

Entry

Timber fretwork

Picture rails

Pendant light

Solid timber door

Fanlight window

Ornate ceiling

Original timber floors

Double power point

Single power point

Kitchen | Meals

Timber benches

Ornate ceiling

Downlights

Ceiling fan | light

Venetian blinds

Aluminium window

Stainless steel dishwasher

Single sink

Draws

Omega induction stove

Wine storage

Fridge neish

Original air vents

7 double power points

Pendant light

Lounge

Original timber floors

Timber Venetian blinds

Picture rail

Ceiling fan light

Ornate ceiling

Fan light window

Samsung wall mounted AC

Ornate timber doors

Original air vent

2 quad power points

TV point

Gas point

Double power point

Bedrooms

FRONT ROOM

Original timber floors

Ceiling fan | light

Ornate ceiling

Timber Venetian blinds

Picture rails

Original air vents

Ornate door

3 quad power points

Ethernet cabling

2 double power points

MAIN

Original timber floors

Hanging and draws robe

Pants hanging

Drapes and sheer curtains

Ceiling fan | light

Manhole

Shelves

Built in robe

TV point

TV mount

Gas point

Wall mounted AC

2 double and quad power points

THIRD BEDROOM

Timber floors

Bookshelf

Downlights

6 double power points

Phone connection

Sliding door

Diamond grill security screen

Double hung window

Bathrooms | Laundry

EN-SUITE

Grey tiles

White wall tiles

Frosted glass double hung window

Porcelain WC

Floating vanity

Wall mounted mirrored cabinet

Double power point

Accessible shower

Clear glass frame

Shower rail

Three-way light

Downlight

Shower neish

Handheld and wall mounted shower heads

BATHROOM | LAUNDRY

Grey floor tiles

White wall tiles

Separate shower

Exhaust fan

Downlights

Linen draws

Broom cupboard

Washing machine neish

Shelves

Wall mounted mirror

Porcelain WC

Mudroom

Grey floor tiles

Storage neish

Downlights

Cat playground

Keypad lock to external door

Solid external door

Rear | Extras

REAR

Undercover area

Paved

Pull out washing line

Porch light

Shelving

BBQ area

Sliding gate

Fully fenced

Workshop/ tool shed

Double carport

Grass area

Lemon tree

EXTRAS

NBN connected

Gas hot water

Hose fitting

Weatherboard and iron construction

16 panels of solar

Relevant Documents

[Make An Offer Form](#)

[Marketing Contract](#)

[Rental Estimate Letter](#)

Comparable Sales

8 FRY STREET, MAITLAND NSW 2320

3 Bed | 2 Bath | 2 Car
\$617,000
Sold ons: 05/10/2021

50 CHARLES STREET, MAITLAND NSW 2320

2 Bed | 1 Bath | 1 Car
\$605,000
Sold ons: 17/09/2021

2 EAST STREET, MAITLAND NSW 2320

2 Bed | 1 Bath | 3 Car
\$615,000
Sold ons: 10/12/2021

The CoreLogic Data provided in this publication is of a general nature and should not be construed as specific advice or relied upon in lieu of appropriate professional advice. While CoreLogic uses commercially reasonable efforts to ensure the CoreLogic Data is current, CoreLogic does not warrant the accuracy, currency or completeness of the CoreLogic Data and to the full extent permitted by law excludes liability for any loss or damage howsoever arising (including through negligence) in connection with the CoreLogic Data.

Around Maitland

About Maitland

A wonderfully diverse lifestyle location, Central Maitland residents are treated to weekly Farmers Markets located within in the Levee alongside cycle and walk ways meandering along the glistening Hunter River as well as regular cultural festivals throughout the year and a bustling "Eat Street" along the East End of High Street. Central Maitland is also home to a number of sports clubs, hotels, the newly constructed indoor pool and the fabulous all access Maitland Park. Inner city living is becoming more and more popular in the Maitland area and with the facility's and lifestyle on offer, it is easy to see why.

We acknowledge the Traditional Custodians of Country throughout Australia and pay respects to their elders past, present and emerging. The suburb of Maitland falls on the traditional lands of the Mindaribba people.

AROUND MAITLAND

SCHOOLS:

- All saints college
- Saint Johns Primary
- Maitland public primary school

CAFES AND RESTAURANTS:

- Whistler
- Lavenders cafe
- The queens arms hotel
- Orange tree cafe
- Outback jacks

SHOPPING:

- 'The Levee'
- Pender place shopping center

About Us



Disclaimer

First National David Haggarty a declare that all information contained herein is gathered from sources we deem to be reliable. However, we cannot guarantee its accuracy and interested persons should rely on their own inquiries.

All images in this e-book are the property of First National David Haggarty. Photographs of the home are taken at the specified sales address and are presented with minimal retouching. No elements within the images have been added or removed.

Plans provided are a guide only and those interested should undertake their own inquiry.